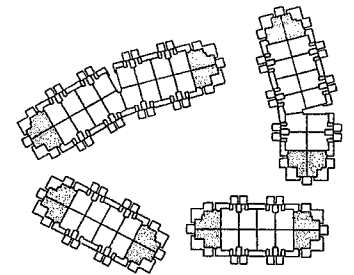
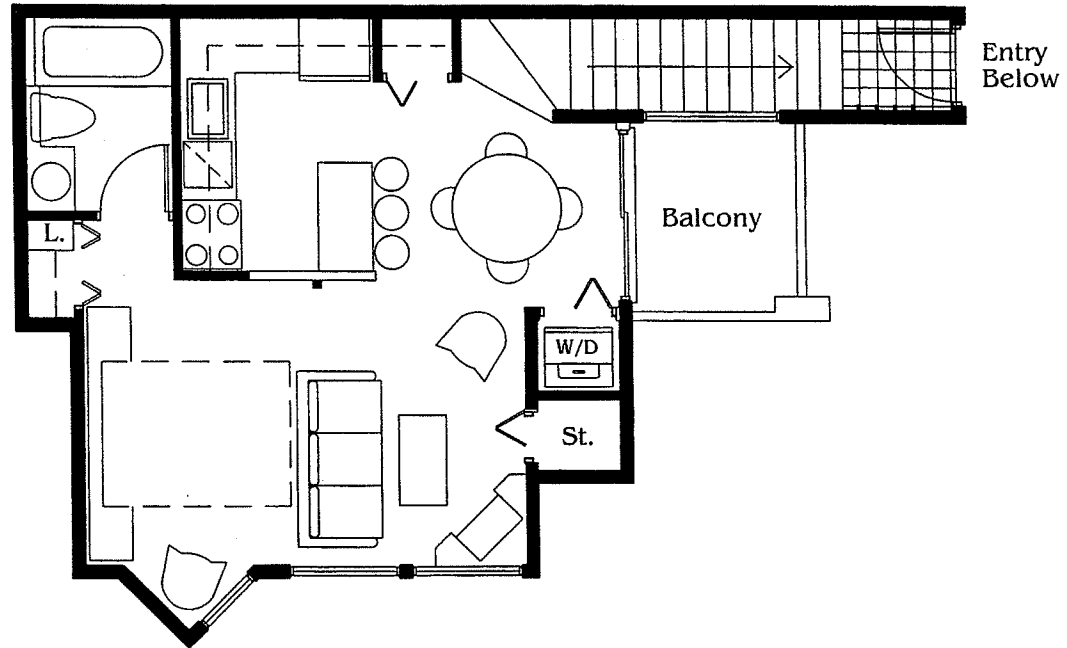
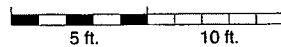




THE LAGOONS  
PLAN E

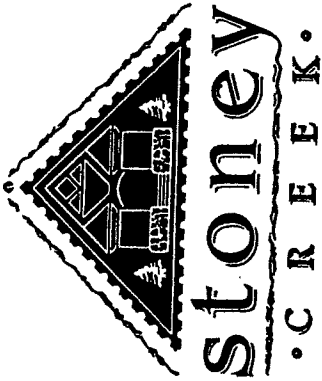


Second Level

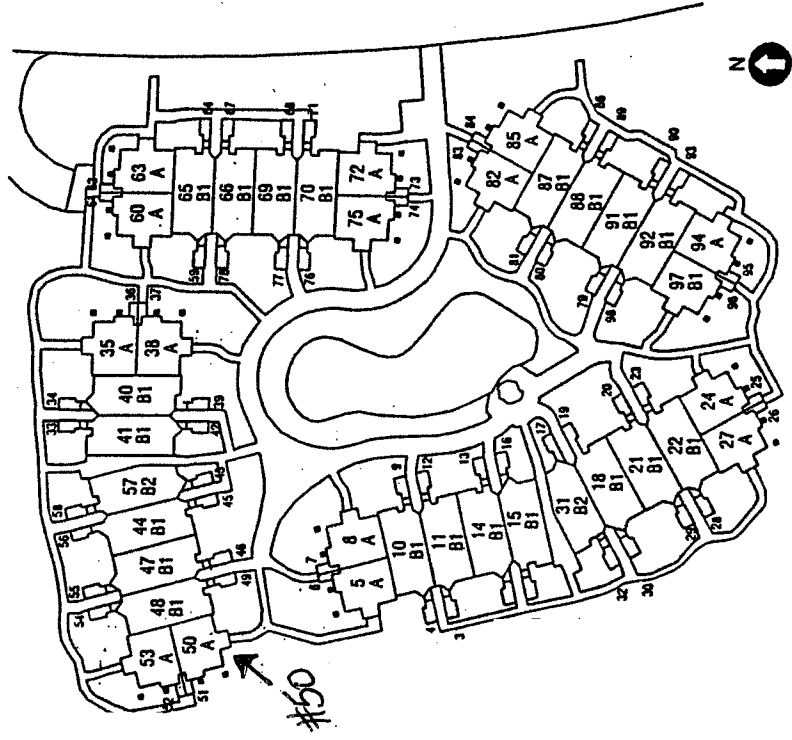


IN THE INTEREST OF CONTINUING PRODUCT IMPROVEMENT, THE BUILDER RESERVES THE RIGHT TO CHANGE FEATURES AND SPECIFICATIONS WITHOUT NOTICE AND MAY VARY SLIGHTLY.

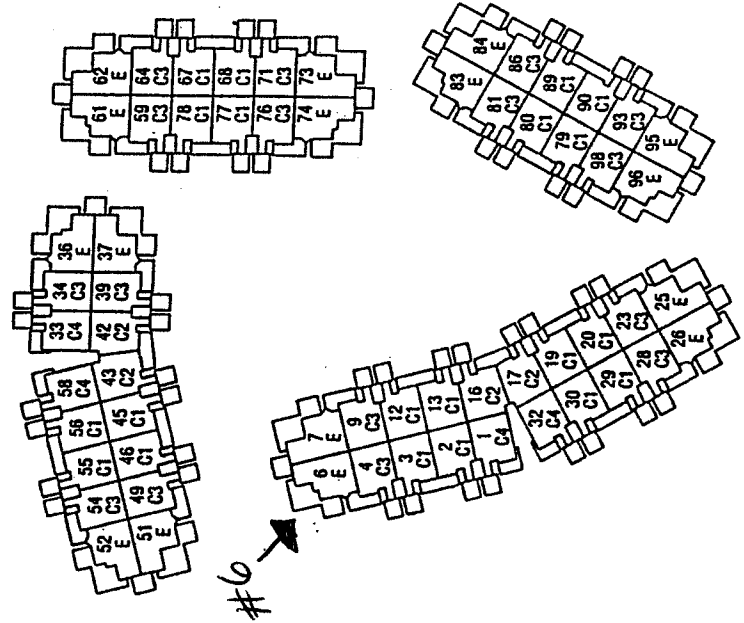
IN THE INTEREST OF CONTINUING PRODUCT IMPROVEMENT, THE BUILDER RESERVES THE RIGHT TO CHANGE FEATURES AND SPECIFICATIONS WITHOUT NOTICE AND MAY VARY SLIGHTLY.



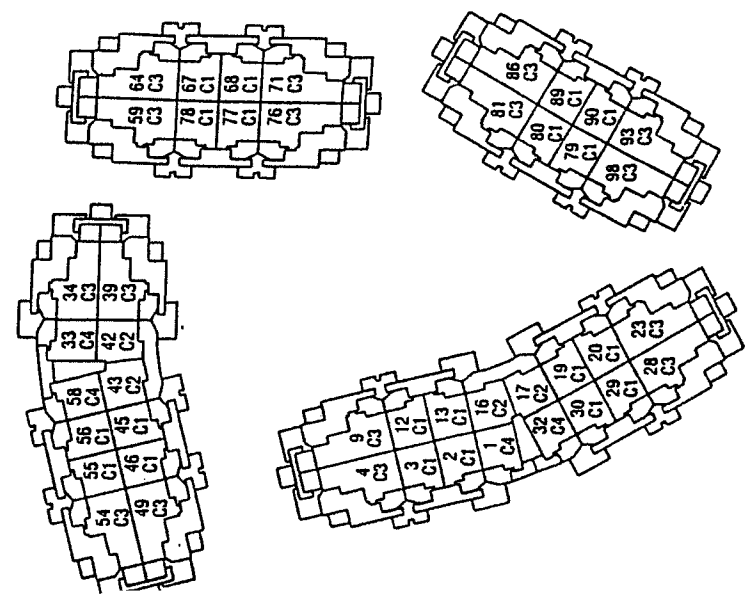
# THE LAGOONS



Ground Level



Second Level



Top Level

IN THE INTEREST OF CONTINUING PRODUCT IMPROVEMENT, THE BUILDER RESERVES THE RIGHT TO CHANGE FEATURES AND SPECIFICATIONS



FEATURES  
THE LAGOONS  
at  
STONEY CREEK

*Designed to be enjoyed as full-time residences, weekend retreats or investment properties these ninety-eight exclusive townhomes offer you a choice of studio, one, two or three bedroom floorplans with bright, open layouts that let in luminous natural light and scintillating mountain views.*

*The park-like setting for this mountain community lies adjacent to Creekside Park & Valley Trail. An ideal location near Village Square, Market Place and the lifts to both mountains has created a perfect balance of relaxed, recreation-oriented living. Your ownership of a home at The Lagoons includes the following:*

*Quality Finishings:*

- Choice of two designer colour schemes
- Slate flooring in entry
- Quality wall to wall carpeting
- Stained wood interior doors & baseboards
- Clean gas fireplace with slate surround & wood mantle
- Vertical blinds
- Optional designer furniture packages available at purchaser's expense

*Kitchens & Bathrooms:*

- Hardwood flooring in kitchens with raised panel oak cabinets & ceramic tiled backsplash
- Ceramic tile flooring in bathrooms
- Tub & shower surrounds in ceramic tile with designer accents
- Jetted tubs
- Appliances include self-cleaning range, refrigerator, dishwasher, built-in microwave, garburator & stacking washer & dryer

*Extra Touches with Security & Comfort in Mind:*

- Underground secured parking with bicycle storage areas
- Security system pre-wire in every home
- Sprinkler system & smoke detectors
- Double glazed thermal break windows
- Owner lock-up in most homes

*Plus.* You'll enjoy access to the future-planned amenity building (to be constructed during the final stage of the comprehensive development).

