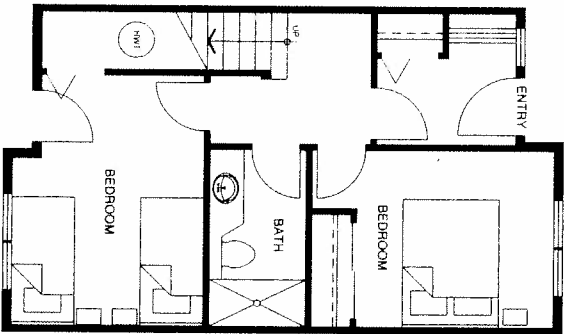
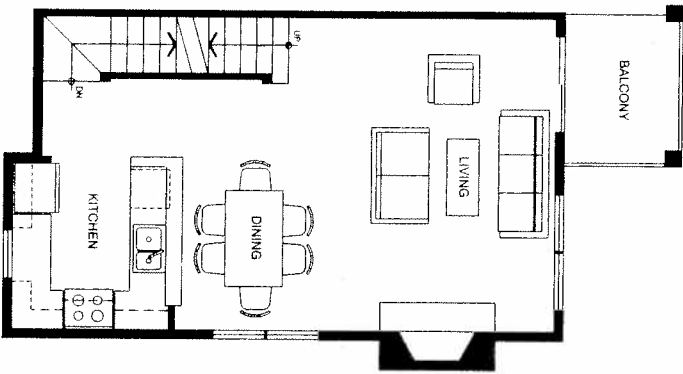


Developer reserves the right to make modifications and changes

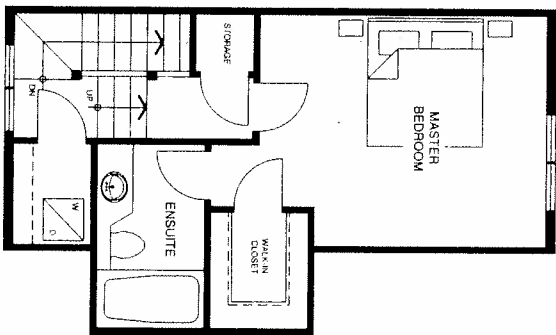
as may be necessary to maintain the high standards of these homes.



LOWER LEVEL



MAIN LEVEL



UPPER LEVEL

UNIT D1
1,326 SQ FT (APPROX.)

Developer reserves the right to make modifications and changes without notice. This is necessary to maintain the high standards of these homes.



FEATURES & AMENITIES

A PERFECT SETTING

- Highest ski-in/ski-out townhome location on Blackcomb Mountain
- Extraordinary views of the surrounding mountains and valley

EXTERIOR FEATURES

- Distinctive wood and stone accents
- Rustic cedar shake roofs
- Attractive landscaping
- Secured underground parking
- Private exterior balconies

LUXURIOUS BATHROOMS

- Kohler fixtures and Moen faucets
- Heated slate floors
- Pine vanity cabinets
- Bathtub and double headed shower with ceramic tile surround

OUTSTANDING FEATURES

- Slate tile entry ways
- Wood millwork including baseboards, casings and window linings
- Warming gas fireplaces with rustic heavy timber mantel and slate hearth
- Dramatic 10 foot ceilings in living room
- Hot tub rough-in
- Solid wood interior doors
- Space saving stacked washer and dryer in each home
- Stylish Sisal carpet
- Two designer colour schemes
- Security rough-in
- Vacuum rough-in
- Wood blinds

GOURMET KITCHENS

- Gourmet kitchen with pine cabinetry
- Heated slate floors
- Quality dishwasher, microwave, garburator, refrigerator and range
- White cast iron sink
- Imported ceramic tile backsplash
- Halogen track lighting

ENERGY EFFICIENCIES

- Double glazed windows
- Insulation R40 roof, R20 exterior walls

CUSTOM HOME OPTIONS

- Hot tub package
- Stainless steel appliance package
- Granite countertops in kitchen and bathrooms

Developer reserves the right to make modifications and changes should this be necessary to maintain the high standards of these homes.